

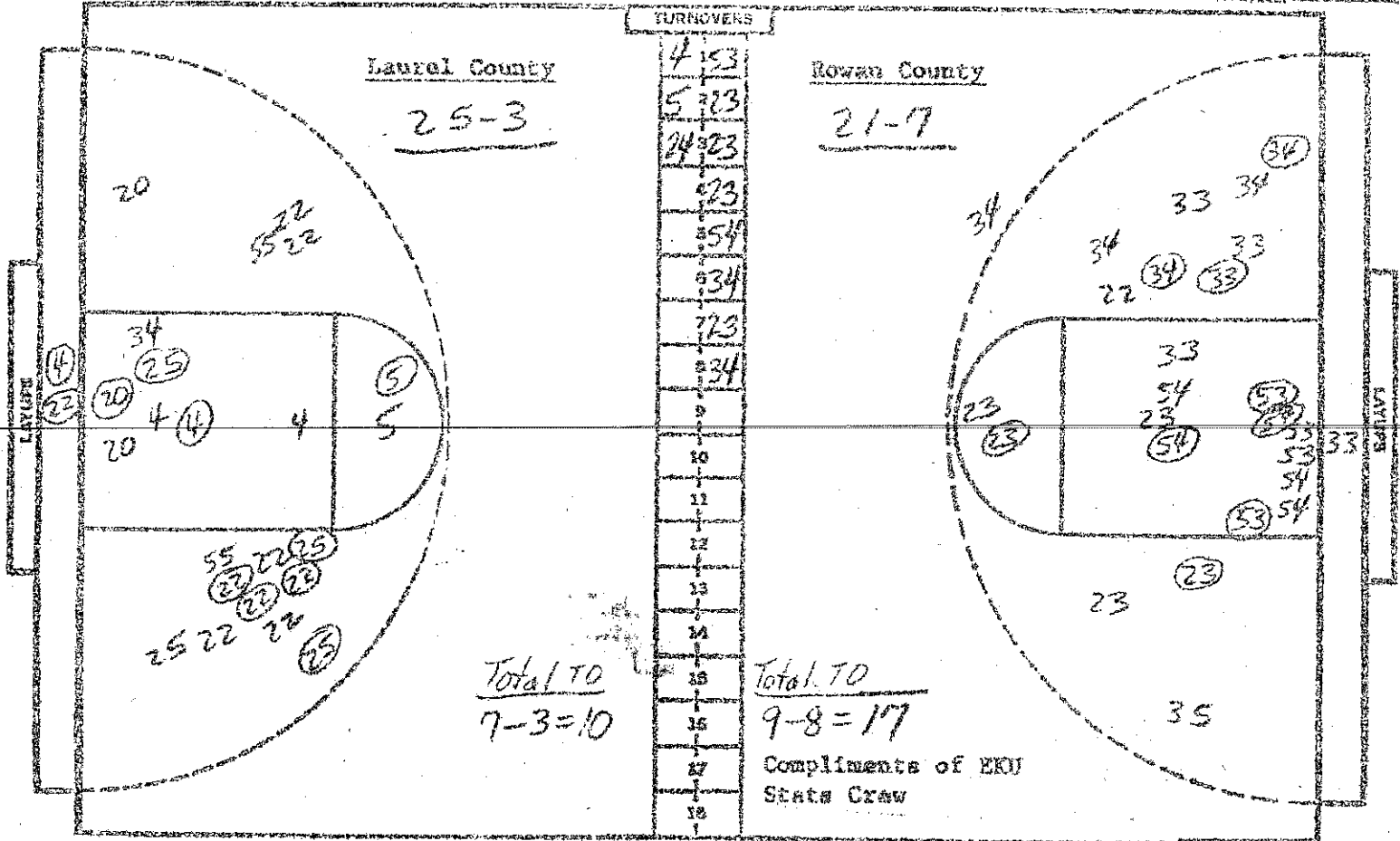
CAGE CHART

Laurel County

AT Rowan County

DATE 3-21-84

HALF FINAL



NO.	Laurel County	FG-FGA	FT-FTA	REB	P	TP	A
4	White, Bobbie	4-7	1-2	6	1	9	4
20	Cupp, Elizabeth	2-5	2-2	2	1	6	0
55	Andrews, Melissa	2-5	0-1	5	3	4	1
22	Smith, Kelly	7-17	0-0	4	0	14	4
5	Irvin, Connie	3-6	2-2	2	2	8	5
25	Trosper, Mark	6-10	0-0	1	2	12	3
23	St. Jones	1-3	0-0	3	1	2	0
52	Jackson, Vickie	0-0	0-1	1	1	0	0
24	Gray, Lisa	0-0	0-0	0	0	0	0
44	Hayes, Susan	0-0	0-1	0	0	0	0
34	St. Jones	0-1	0-0	1	0	0	0
32	Parratt, Kathy	0-0	0-0	1	0	0	0
		-	-				
		-	-	1	DB		
TOTALS		25-54	5-9	27	11	55	17

PERCENTS 46.3 55.6 1 TEAM REBOUNDS NOT IN TOTAL

NO.	Rowan County	FG-FGA	FT-FTA	REB	P	TP	A
33	Dusley, Beth	3-9	0-0	2	2	6	1
53	Barker, Susan	2-5	1-3	7	2	5	0
54	Jenny Magrane	3-7	2-4	13	0	8	1
34	Braughler, Mary	3-8	2-2	2	2	8	1
23	Lawson, Cindy	7-14	0-0	3	1	14	2
22	Jenkins, Jimmy	0-1	0-0	1	0	0	0
32	Collins, Ange	0-0	0-0	0	0	0	0
44	Jo. Magrane	0-0	0-0	0	0	0	0
25	Julie Magrane	0-0	0-0	1	1	0	0
35	Wilson, Lacey	0-1	1-2	1	0	1	0
43	Waltz, Missy	0-0	0-0	0	0	0	0
		-	-				
		-	-				
		-	-	4	DB		
TOTALS		18-45	6-11	34	8	42	5

PERCENTS 40.0 54.5 3 TEAM REBOUNDS NOT IN TOTAL

Laurel County

Rowan County

SCORE BY HALVES

16-12-15-12=55

13-9-9-11=42

OFFICIALS: Clarence Bell & Wade Durbin

ATTENDING: 2700 FS

Opening Round - Girls' State High School Tournament
 March 21, 1984 - Alumni Coliseum - Richmond, Ky
 Rowan County High School vs. Laurel County High School
 Officials - Clarence Bell and Hada Durbin

Time	Rowan Co. play	Play-by-Play First Quarter	Laurel Co. play	Time
8:00	Barker, Lawson, Braughlar, Ousley, Je. Magrane	Starters	White, Cupp, Andrews, Smith, Irvin	
			foul on Irvin P1T1	7:51
7:37	Braughlar 12 ft. jumper re. baseline	2-0		
6:30	Lawson drives the lane and pulls up from 10 ft.	4-0		6:08
		4-2	Cupp from 18 ft. (Smith)	
		4-4	Irvin from 19 ft. straightaway (Andrews)	5:37
5:04	Lawson takes it all the way on the break	6-4		
			foul on White P1T2	4:13
4:06	Ousley from the free throw line (Je. Magrane)	8-4		
		8-6	Smith with the inside move foul on Andrews P1T3	3:16 2:41
2:26	Lawson 16 ft. jumper	10-6		
		10-8	White puts back in own rebound	1:58
		10-10	Andrews 8 ft. jumper	1:38
1:23	Je. Magrane lays it in (Ousley)	12-10		
1:10	foul on Ousley P1T1		Andrews 12 ft. jumper left baseline fts	
	Barker fts-fts	12-12		
		13-12	foul on Irvin P2T4	:50
	Barker fts*	13-14	White from free throw line (Trooper)	:34
			foul on Cupp P1T5 BONUS	:22
			Trooper lays it in (Smith)	:04
		<u>Second Quarter</u>		
		13-18	S. Jones 8 ft. bank shot	7:38
	Je. Magrane fts-ft	14-18	foul on Andrews P2 B	7:27
		14-20	Smith 10 ft. jumpshot	7:12
6:40	Rowan time-out (1)	14-22	Trooper 13 ft. right baseline (White)	6:26
	Braughlar fts-ft	16-22	foul on Trooper P1 B	6:15
6:02	Lawson drives right hits from 16 ft.	18-22		
		18-26	Trooper hits from 19 ft. right baseline (Smith)	5:49
		18-28	Smith lays it in (Trooper)	5:27
4:07	Lawson pulls up and hits from 17	20-26		
3:38	Ousley picks up loose ball and lays it in	22-26		
		22-28	Laurel time-out (1)	2:43
			Irvin drives the lane to the easy basket as the four corners reap dividends	:21
		22-28		
	Rowan County	22-28	Laurel County	

Ties - 2
 Lead changes - 1

Opening Round - Girls' State High School Tournament
 March 21, 1984 - Alumni Coliseum - Richmond, Ky
 Rowan County High School vs. Laurel County High School
 Attendance- 3200 est.

<u>Time</u>	<u>Rowan Co. play</u>	<u>Play-by-Play Third Quarter</u>	<u>Laurel Co. play</u>	<u>Time</u>
		22-25		
			foul on Andrews P3T1	7:49
6:30	Braughler jump shot from 14 ft.	24-28		
5:55	Barker banks the rebound home	26-28		
		26-30	Smith 17 ft. jumper(/white)	5:35
	Je. Magrane fta-ft	27-30	foul on Trooper P2T2	5:16
		27-32	Smith 15 ft. left side (Irvin)	4:22
			Smith fast break layup off of	4:00
		27-34	Irvin steal(Irvin)	
3:38	Braughler from deep in the left cor.	29-34		
3:15	foul on Barker P1T1	29-35	White fta-ft	2:50
			Smith deflects ball to White	
		29-37	who takes it all the way for	
			a layup	
2:13	Rowan time-out (1)		Trooper with a spinningbank shot	2:20
1:45	Je. Magrane 10 ft. turnaround from		(Irvin)	
	lane (Lawson)	31-39		
		31-41	Smith 17 ft. jumper left side (Irvin)	1:24
			White drives to center lane and	:06
		31-43	banks it in	
		<u>Fourth Quarter</u>		
		31-45	Trooper hits from 16 ft.	7:29
7:14	Ousley turns from 12 and banks	33-45		
	it in		foul on S. Jones P1T3	6:57
6:15	Je. Magrane snares loose ball	35-45		
	and banks it in		Laurel time-out (1)	5:39
		35-47	Trooper 18 ft.	5:17
4:57	Lawson drive pulls up and hits	37-47		
	from 14 ft.		Irvin from just inside top of	4:38
		37-49	key	
3:56	Rowan time-out (2)			
3:10	foul on Braughler P1T2	37-51	Cupp ft-ft	
2:54	foul on Barker P2T3	39-51		
2:34	Lawson from the free throw line		Laurel spreads it out and Cupp	2:15
		39-53	gets the layup	
1:24	Barker with a short jumper	41-53		
1:17	foul on Lawson P1T4		Irvin ft+ft	
:36	foul on Braughler P2T5 BONUS	41-55	Hayes fta+	
:21	foul on Ousley P2 B		Jackson fta+	
:17	foul on Ju. Magrane P1 B	42-55	foul on Jackson P1T4	:02
	Wilson fta-ft			
	Rowan County (21-7)	42		
	Laurel County (25-3)	55		

Ties -2
 Lead changes - 1